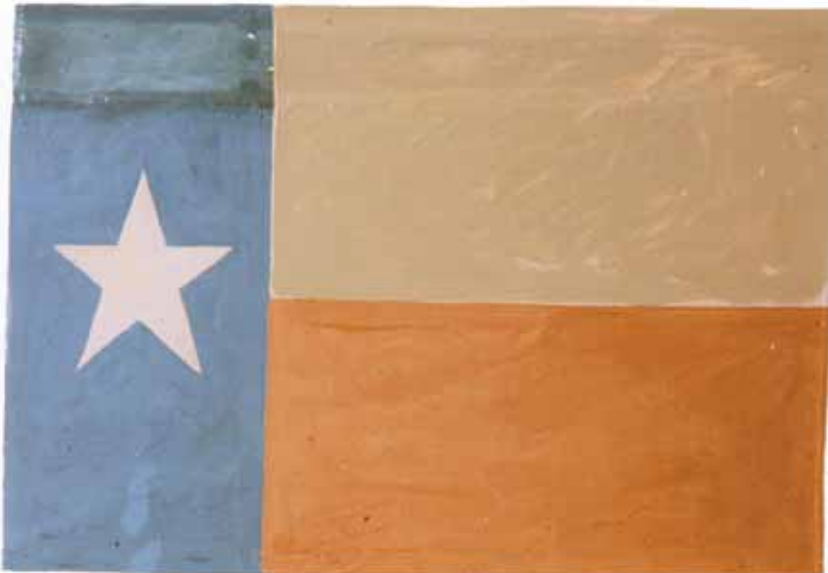




Monroe 2.12.2



Monroe 2.12.3

ID Number: Monroe 2.12.2 and Monroe 2.12.3

Subject/Description:

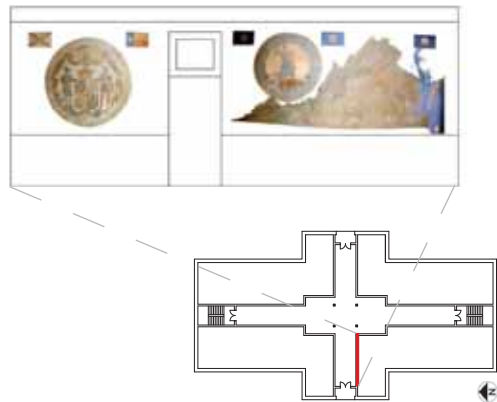
Monroe 2.12.2 - Inspired by the Alabama state flag,

Monroe 2.12.3 - Inspired by the Texas state flag

Artist: Emil Schnellock in collaboration with faculty and students

Date Painted: 1942 - late 1940s

Medium: Egg tempura on plaster





ID Number: Monroe 2.12.4

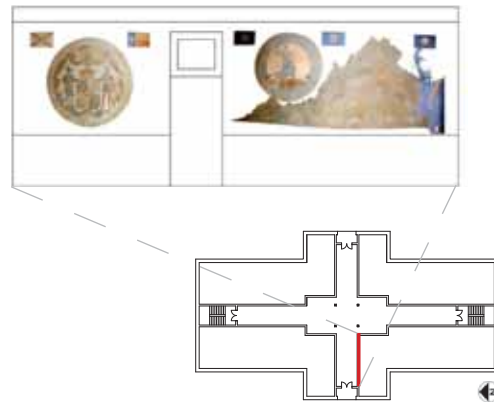
Subject/Description:

Inspired by the state of Virginia

Artist: Emil Schnellock in collaboration with faculty and students

Date Painted: 1942 - late 1940s

Medium: Egg tempura on plaster





ID Number: Monroe 2.12.5

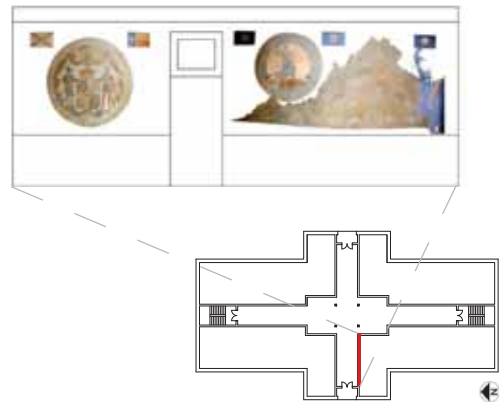
Subject/Description:

Inspired by Virginia state flag

Artist: Emil Schnellock in collaboration with faculty and students

Date Painted: 1942 - late 1940s

Medium: Egg tempura on plaster





Monroe 2.12.6



Monroe 2.12.7

ID Number: Monroe 2.12.6 and Monroe 2.12.7

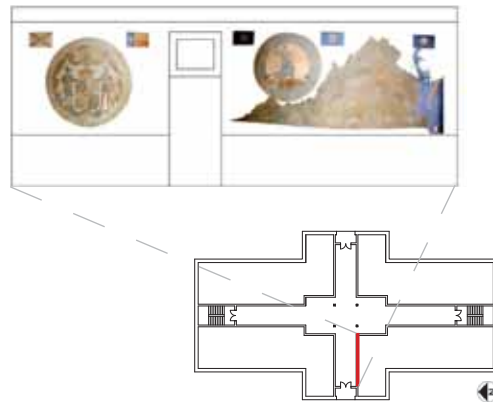
Subject/Description:

Monroe 2.12.6 - Inspired by the Virginia state seal - obverse,
 Monroe 2.12.7 - Inspired by the Virginia state seal - reverse

Artist: Emil Schnellock in collaboration with faculty and students

Date Painted: 1942 - late 1940s

Medium: Egg tempura on plaster





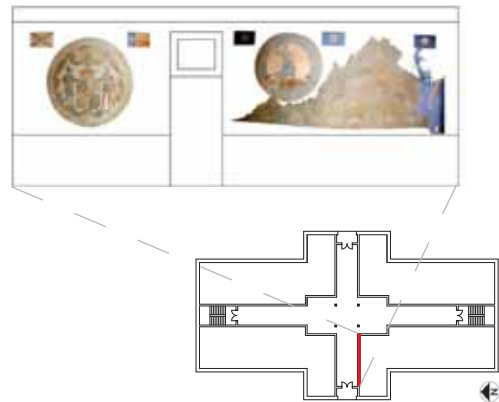
ID Number: Monroe 2.12.8

Subject/Description:
Inspired by the Virginia state seal

Artist: Emil Schnellock in collaboration with faculty and students

Date Painted: 1942 - late 1940s

Medium: Egg tempura on plaster





ID Number: Monroe 2.13.1

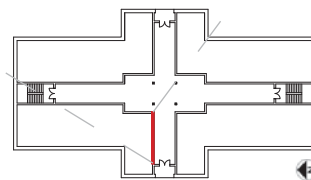
Subject/Description:

Inspired by the Colony of Virginia Coat of Arms

Artist: Emil Schnellock in collaboration with faculty and students

Date Painted: 1942 - late 1940s

Medium: Egg tempura on plaster





Monroe 2.13.2



Monroe 2.13.3

ID Number: Monroe 2.13.2 and Monroe 2.13.3

Subject/Description:

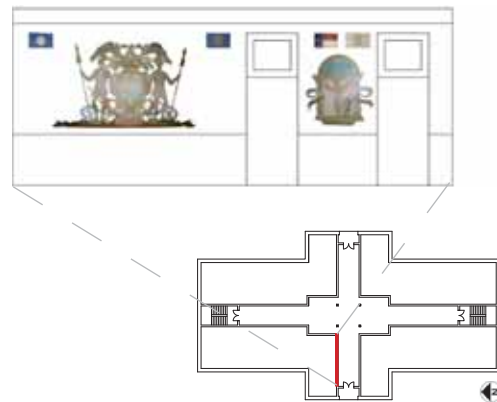
Monroe 2.13.2 - Inspired by the Virginia state seal,

Monroe 2.13.3 - Inspired by the Virginia state seal

Artist: Emil Schnellock in collaboration with faculty and students

Date Painted: 1942 - late 1940s

Medium: Egg tempura on plaster





ID Number: Monroe 12.13.4

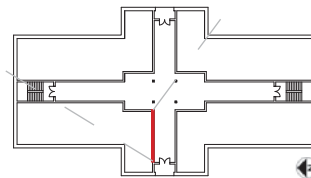
Subject/Description:

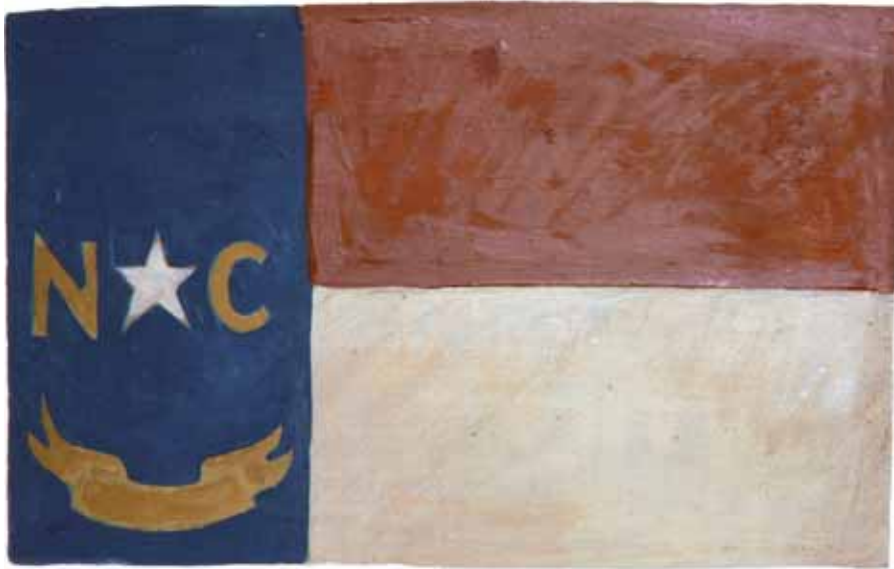
Inspired by the Georgia state flag

Artist: Emil Schnellock in collaboration with faculty and students

Date Painted: 1942 - late 1940s

Medium: Egg tempura on plaster





Monroe 12.13.5



Monroe 12.13.6

ID Number: Monroe 12.13.5 and Monroe 12.13.6

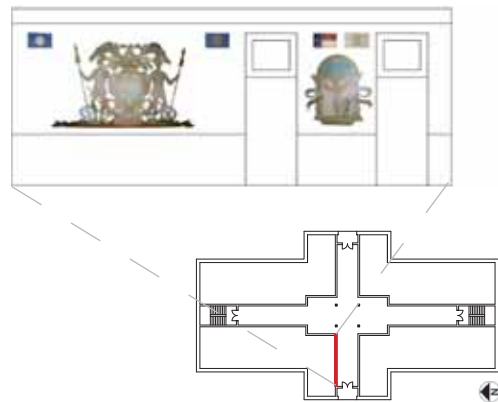
Subject/Description:

Monroe 12.13.5 - Inspired by the North Carolina state flag,
Monroe 12.13.6 - Inspired by the Illinois state flag

Artist: Emil Schnellock in collaboration with faculty and students

Date Painted: 1942 - late 1940s

Medium: Egg tempura on plaster





ID Number: Monroe 2.14.1

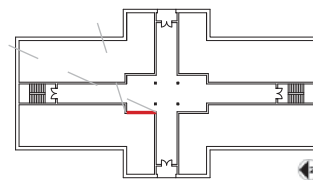
Subject/Description:

Inspired by the James Monroe, James Monroe's law offices, and George Washington

Artist: Emil Schnellock in collaboration with faculty and students

Date Painted: 1942 - late 1940s

Medium: Egg tempura on plaster





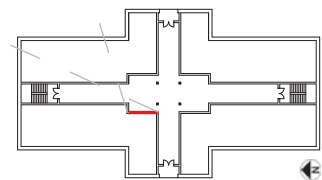
ID Number: Monroe 2.14.2

Subject/Description:
Inspired by the James Monroe's law office

Artist: Emil Schnellock in collaboration with faculty and students

Date Painted: 1942 - late 1940s

Medium: Egg tempura on plaster





Monroe 2.14.3



Monroe 2.14.4

ID Number: Monroe 2.14.3 and Monroe 2.14.4

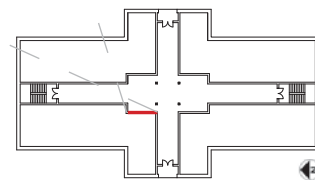
Subject/Description:

Monroe 2.14.3 - Inspired by James Monroe,
Monroe 2.14.3 - Inspired by George Washington

Artist: Emil Schnellock in collaboration with
faculty and students

Date Painted: 1942 - late 1940s

Medium: Egg tempura on plaster





Monroe 2.14.5



Monroe 2.14.6

ID Number: Monroe 2.14.5 and Monroe 2.14.6

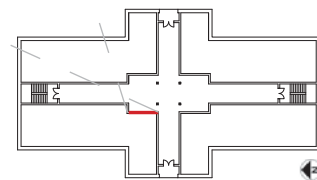
Subject/Description:

Monroe 2.14.5 - Inspired by the Montana state flag,
Monroe 2.14.6 - Inspired by the Idaho state flag

Artist: Emil Schnellock in collaboration with faculty and students

Date Painted: 1942 - late 1940s

Medium: Egg tempura on plaster





ID Number: Monroe 2.15.1

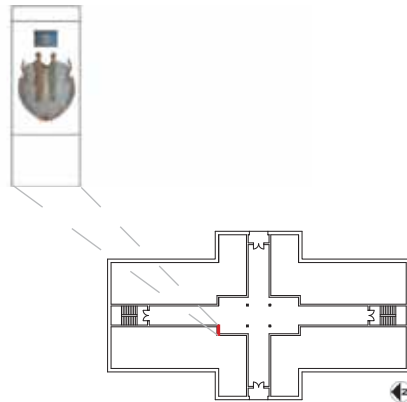
Subject/Description:

Inspired by the Kentucky state seal

Artist: Emil Schnellock in collaboration with faculty and students

Date Painted: 1942 - late 1940s

Medium: Egg tempura on plaster





ID Number: Monroe 2.15.2

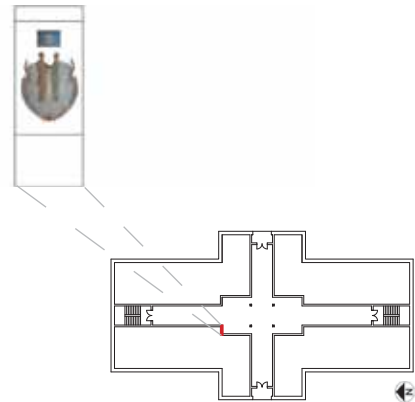
Subject/Description:

Inspired by the New Hampshire state flag

Artist: Emil Schnellock in collaboration with faculty and students

Date Painted: 1942 - late 1940s

Medium: Egg tempura on plaster





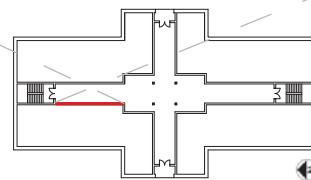
ID Number: Monroe 2.16.1

Subject/Description: Inspired by the Montana state flag

Artist: Emil Schnellock in collaboration with faculty and students

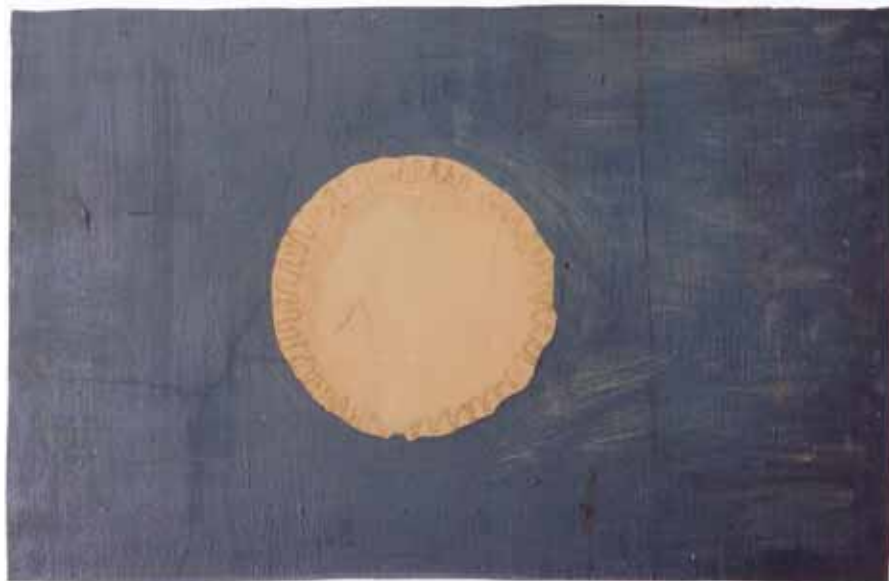
Date Painted: 1942 - late 1940s

Medium: Egg tempura on plaster





Monroe 2.16.2



Monroe 2.16.3

ID Number: Monroe 2.16.2 and Monroe 2.16.3

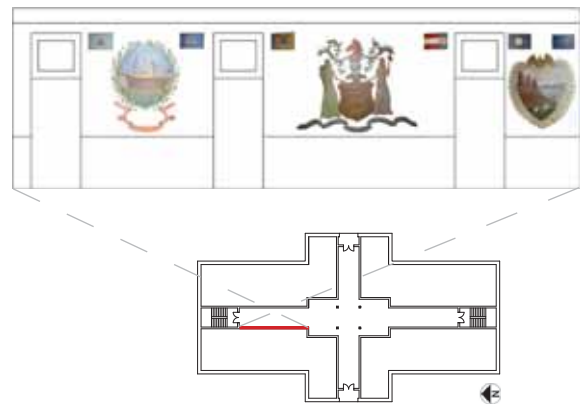
Subject/Description:

Monroe 2.16.2 - Inspired by the Nevada state flag,
Monroe 2.16.3 - untitled

Artist: Emil Schnellock in collaboration with faculty and students

Date Painted: 1942 - late 1940s

Medium: Egg tempura on plaster





ID Number: Monroe 2.16.4

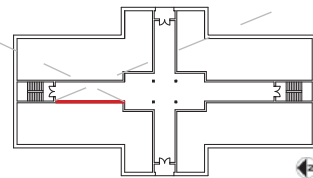
Subject/Description:

Inspired by the New Jersey state flag

Artist: Emil Schnellock in collaboration with faculty and students

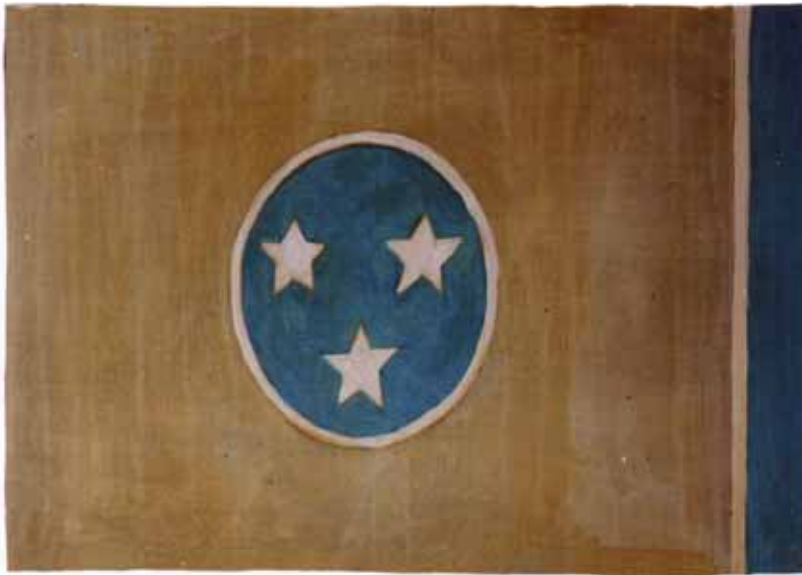
Date Painted: 1942 - late 1940s

Medium: Egg tempura on plaster





Monroe 2.16.5



Monroe 2.16.6

ID Number: Monroe 2.16.5 and Monroe 2.16.6

Subject/Description:

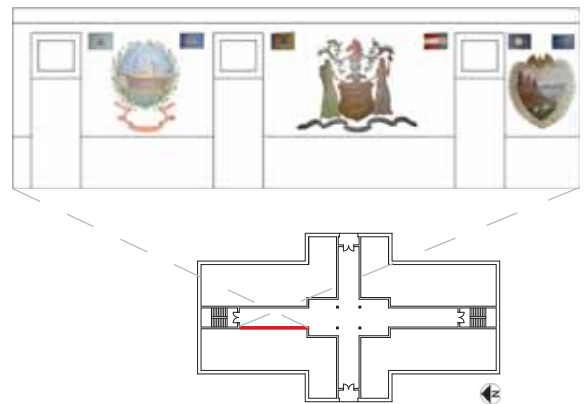
Monroe 2.16.5 - Inspired by the Georgia state flag,

Monroe 2.16.6 - Inspired by the Tennessee state flag

Artist: Emil Schnellock in collaboration with faculty and students

Date Painted: 1942 - late 1940s

Medium: Egg tempura on plaster





ID Number: Monroe 2.16.7

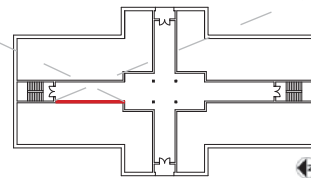
Subject/Description:

Inspired by the New Hampshire state flag

Artist: Emil Schnellock in collaboration with faculty and students

Date Painted: 1942 - late 1940s

Medium: Egg tempura on plaster





Monroe 2.16.8



Monroe 2.16.9

ID Number: Monroe 2.16.8 and Monroe 2.16.9

Subject/Description:

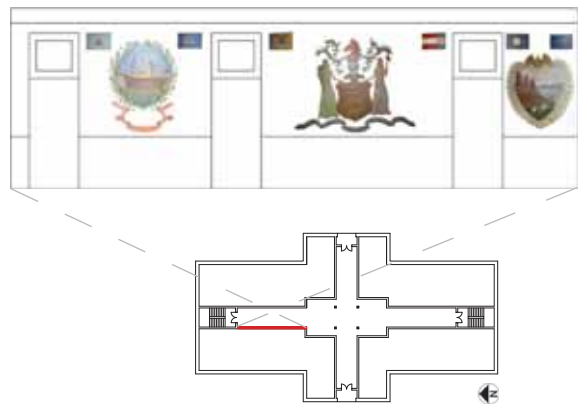
Monroe 2.16.8 - Inspired by the Kentucky state flag,

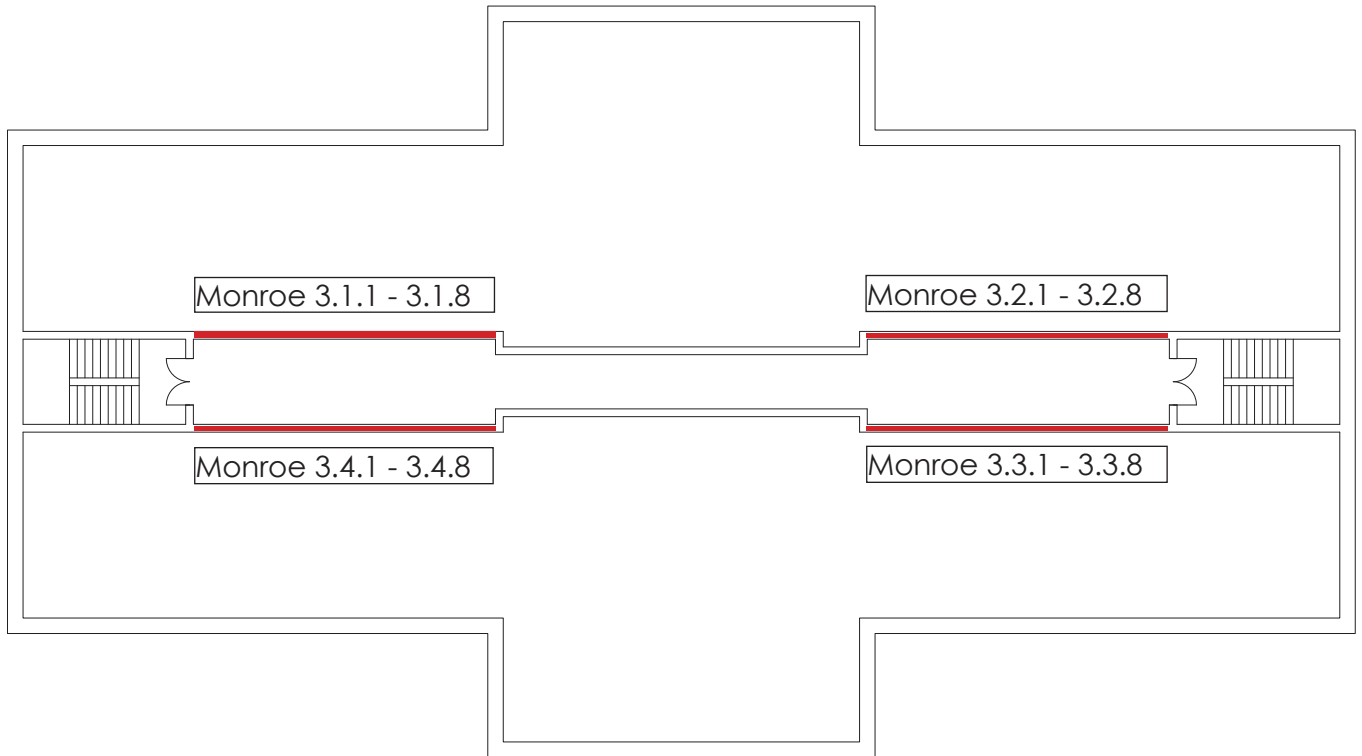
Monroe 2.16.9 - Inspired by the West Virginia state flag.

Artist: Emil Schnellock in collaboration with faculty and students

Date Painted: 1942 - late 1940s

Medium: Egg tempura on plaster





Not to scale

Location of Monroe Hall murals
3rd Floor Plan





ID Number: Monroe 3.1.1

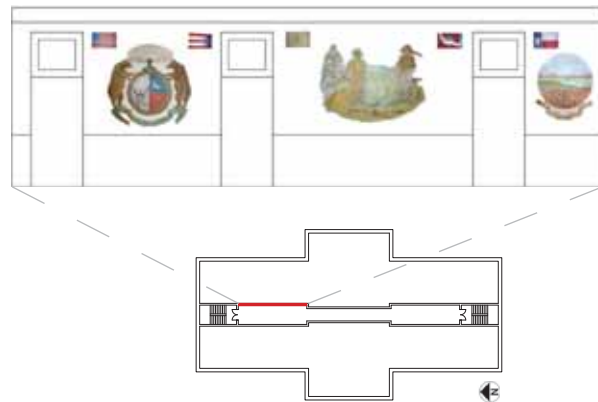
Subject/Description:

Inspired by the Missouri state flag

Artist: Emil Schnellock in collaboration with faculty and students

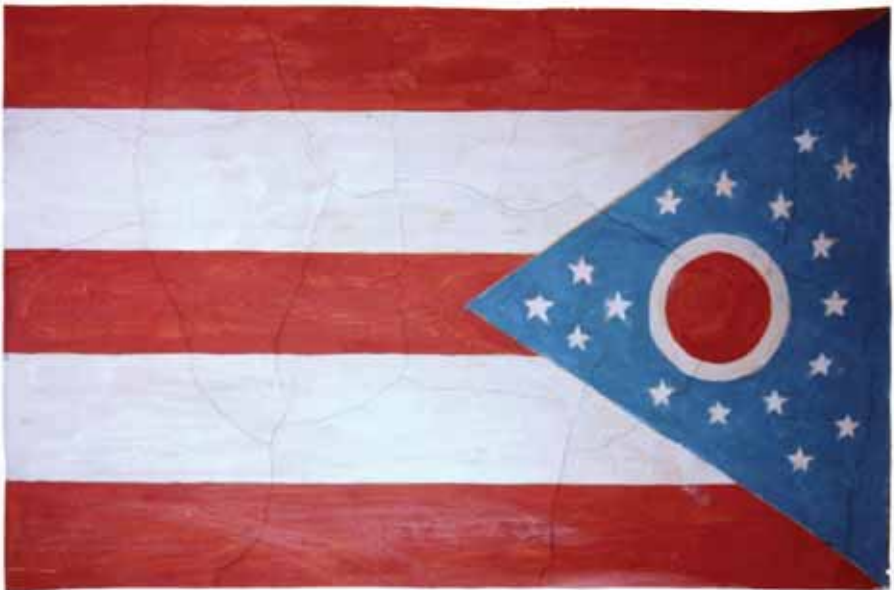
Date Painted: 1942 - late 1940s

Medium: Egg tempura on plaster





Monroe 3.1.2



Monroe 3.1.3

ID Number: Monroe 3.1.2 and Monroe 3.1.3

Subject/Description:

Monroe 3.1.2 - Inspired by the third Vermont state flag,
Monroe 3.1.3 - Inspired by the Ohio state flag

Artist: Emil Schnellock in collaboration with faculty and students

Date Painted: 1942 - late 1940s

Medium: Egg tempura on plaster

