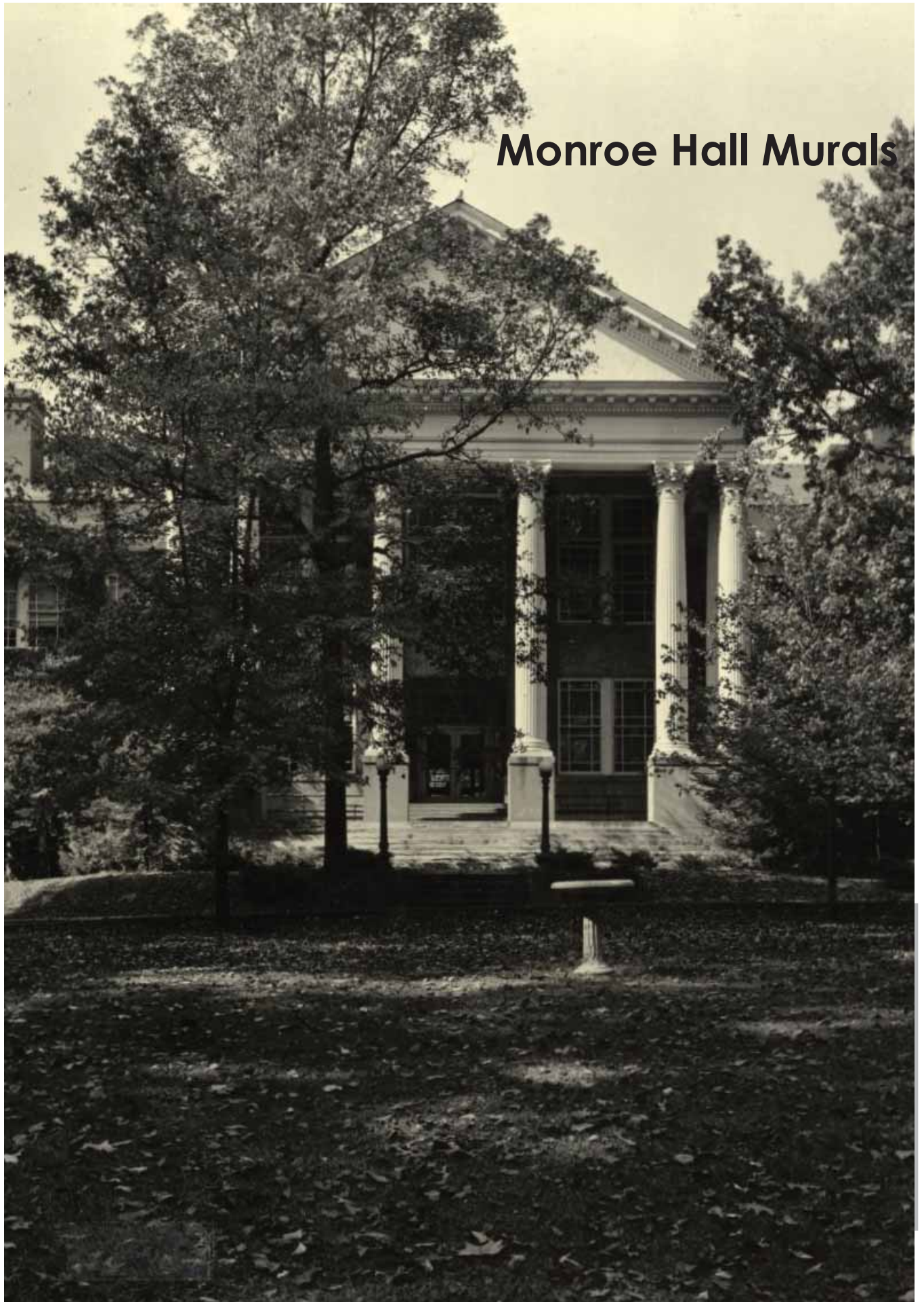
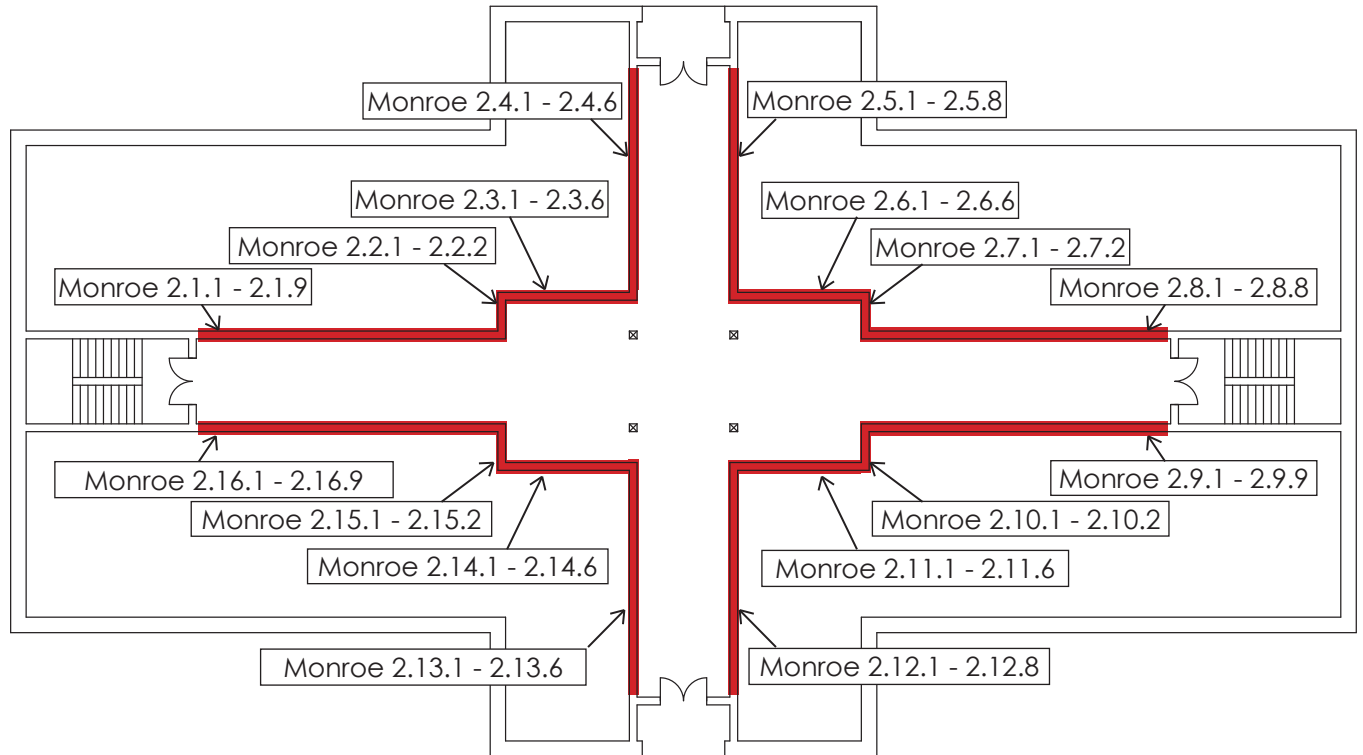


Monroe Hall Murals





Not to scale

Location of Monroe Hall murals
2nd Floor Plan





ID Number: Monroe 2.1.1

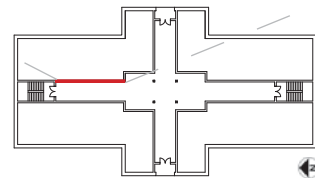
Subject/Description:

Inspired by the North Carolina state seal

Artist: Emil Schnellock in collaboration with faculty and students

Date Painted: 1942 - late 1940s

Medium: Egg tempura on plaster





Monroe 2.1.2



Monroe 2.1.3

ID Number: Monroe 2.1.2 and Monroe 2.1.3

Subject/Description:

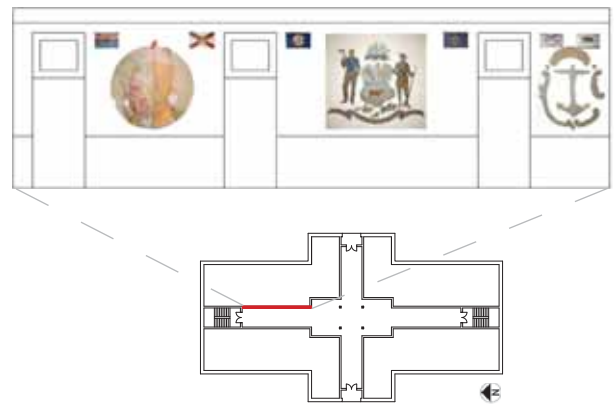
Monroe 2.1.2 - Inspired by the Arizona state flag

Monroe 2.1.3 - Inspired by the Florida state flag

Artist: Emil Schnellock in collaboration with faculty and students

Date Painted: 1942 - late 1940s

Medium: Egg tempura on plaster





ID Number: Monroe 2.1.4

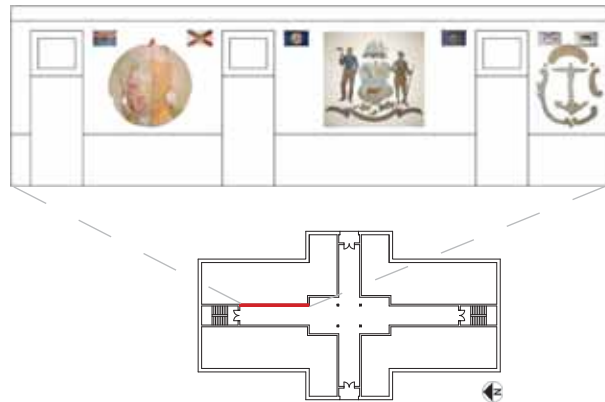
Subject/Description:

Inspired by the Delaware state seal

Artist: Emil Schnellock in collaboration with faculty and students

Date Painted: 1942 - late 1940s

Medium: Egg tempura on plaster





Monroe 2.1.5



Monroe 2.1.6

ID Number: Monroe 2.1.5 and Monroe 2.1.6

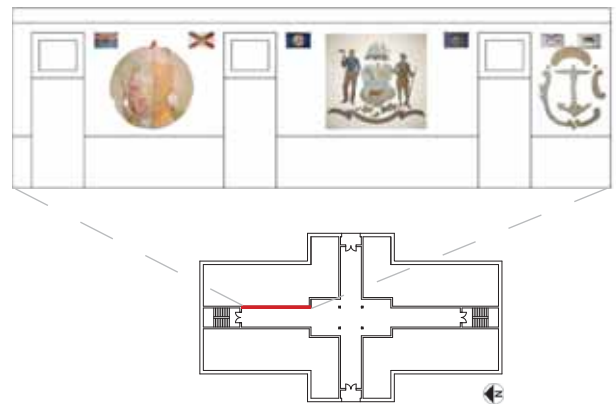
Subject/Description:

Monroe 2.1.5 - unknown,
Monroe 2.1.6 - Inspired by the South Dakota flag

Artist: Emil Schnellock in collaboration with faculty and students

Date Painted: 1942 - late 1940s

Medium: Egg tempura on plaster





ID Number: Monroe 2.1.7

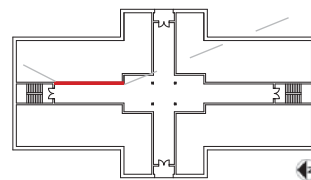
Subject/Description:

Inspired by the Rhode Island state seal

Artist: Emil Schnellock in collaboration with faculty and students

Date Painted: 1942 - late 1940s

Medium: Egg tempura on plaster





Monroe 2.1.8



Monroe 2.1.9

ID Number: Monroe 2.1.8 and Monroe 2.1.9

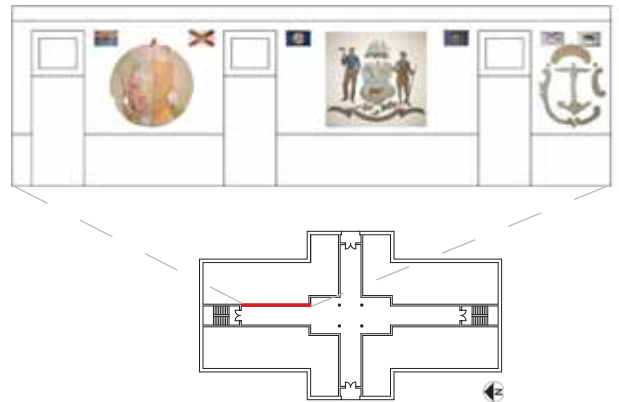
Subject/Description:

Monroe 2.1.8 - Inspired by the Iowa state flag,
Monroe 2.1.9 - Inspired by the California state flag

Artist: Emil Schnellock in collaboration with faculty and students

Date Painted: 1942 - late 1940s

Medium: Egg tempura on plaster





ID Number: Monroe 2.2.1

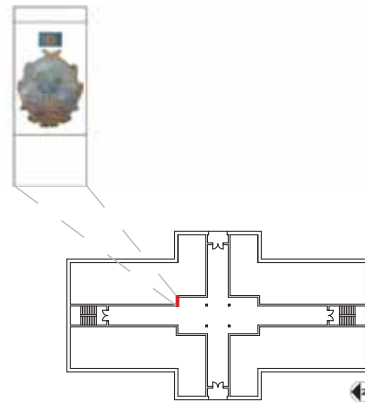
Subject/Description:

Inspired by the North Dakota state seal

Artist: Emil Schnellock in collaboration with faculty and students

Date Painted: 1942 - late 1940s

Medium: Egg tempura on plaster





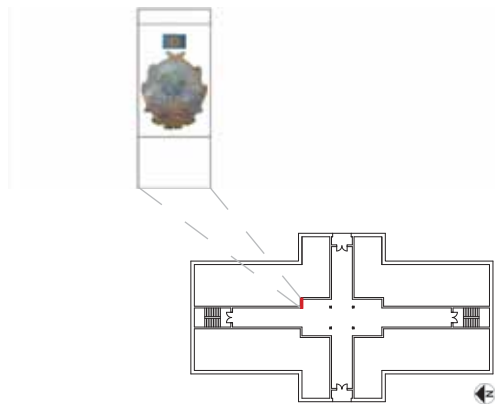
ID Number: Monroe 2.2.2

Subject/Description:
Inspired by the Great Seal of the United States

Artist: Emil Schnellock in collaboration with faculty and students

Date Painted: 1942 - late 1940s

Medium: Egg tempura on plaster





ID Number: Monroe 2.3.1

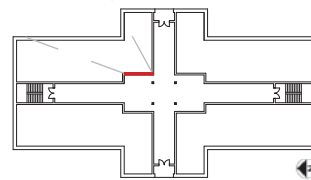
Subject/Description:

Inspired by Thomas Jefferson, James Monroe's Oak Hill, and James Monroe

Artist: Emil Schnellock in collaboration with faculty and students

Date Painted: 1942 - late 1940s

Medium: Egg tempura on plaster





ID Number: Monroe 2.3.2

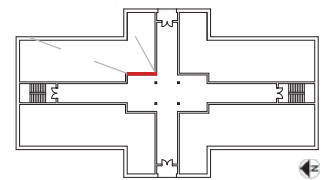
Subject/Description:

Inspired by James Monroe's Oak Hill

Artist: Emil Schnellock in collaboration with faculty and students

Date Painted: 1942 - late 1940s

Medium: Egg tempura on plaster





Monroe 2.3.3



Monroe 2.3.4

ID Number: Monroe 2.3.3 and Monroe 2.3.4

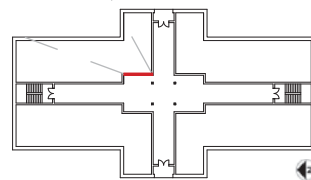
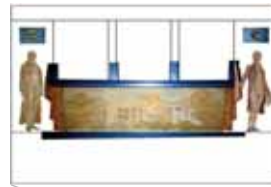
Subject/Description:

Monroe 2.3.3 - Inspired by Thomas Jefferson,
Monroe 2.3.4 - Inspired by James Monroe

Artist: Emil Schnellock in collaboration with
faculty and students

Date Painted: 1942 - late 1940s

Medium: Egg tempura on plaster





Monroe 2.3.5



Monroe 2.3.6

ID Number: Monroe 2.3.5 and Monroe 2.3.6

Subject/Description:

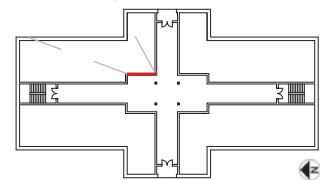
Monroe 2.3.5 - Inspired by the Nebraska state flag,

Monroe 2.3.6 - Inspired by the Alaska state seal

Artist: Emil Schnellock in collaboration with faculty and students

Date Painted: 1942 - late 1940s

Medium: Egg tempura on plaster





ID Number: Monroe 2.4.1

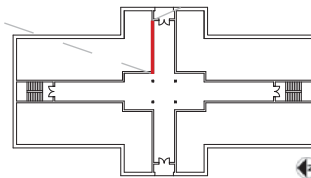
Subject/Description:

Inspired by the Connecticut state flag

Artist: Emil Schnellock in collaboration with faculty and students

Date Painted: 1942 - late 1940s

Medium: Egg tempera on plaster





Monroe 2.4.2



Monroe 2.4.3

ID Number: Monroe 2.4.2 and Monroe 2.4.3

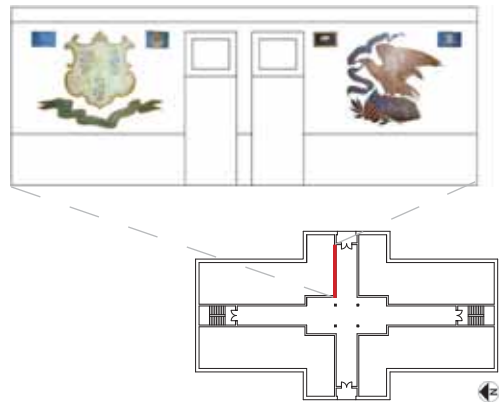
Subject/Description:

Monroe 2.4.2 - Inspired by the Indiana state flag,
Monroe 2.4.3 - Inspired by the Utah state flag

Artist: Emil Schnellock in collaboration with
faculty and students

Date Painted: 1942 - late 1940s

Medium: Egg tempura on plaster





ID Number: Monroe 2.4.4

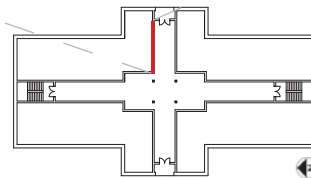
Subject/Description:

Inspired by the Illinois state flag

Artist: Emil Schnellock in collaboration with faculty and students

Date Painted: 1942 - late 1940s

Medium: Egg tempura on plaster





Monroe 2.4.5



Monroe 2.4.6

ID Number: Monroe 2.4.5 and Monroe 2.4.6

Subject/Description:

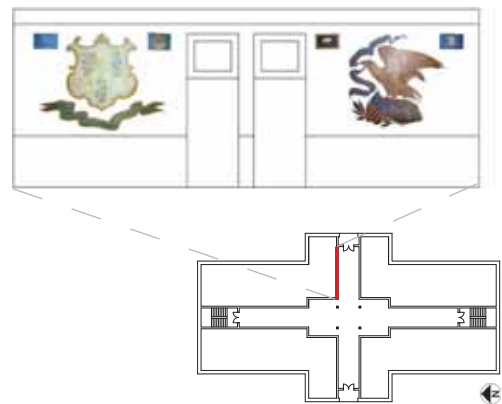
Monroe 2.4.5 - Inspired by the Wyoming state flag,

Monroe 2.4.6 - Inspired by the Louisiana state flag

Artist: Emil Schnellock in collaboration with faculty and students

Date Painted: 1942 - late 1940s

Medium: Egg tempura on plaster





ID Number: Monroe 2.5.1

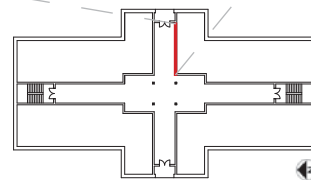
Subject/Description:

Inspired by the Pennsylvania state flag

Artist: Emil Schnellock in collaboration with faculty and students

Date Painted: 1942 - late 1940s

Medium: Egg tempura on plaster





Monroe 2.5.2



Monroe 2.5.3

ID Number: Monroe 2.5.2 and Monroe 2.5.3

Subject/Description:

Monroe 2.5.2 - Inspired by the New Jersey state flag,
Monroe 2.5.3 - Inspired by the Rhode Island state flag

Artist: Emil Schnellock in collaboration with faculty and students

Date Painted: 1942 - late 1940s

Medium: Egg tempura on plaster

